

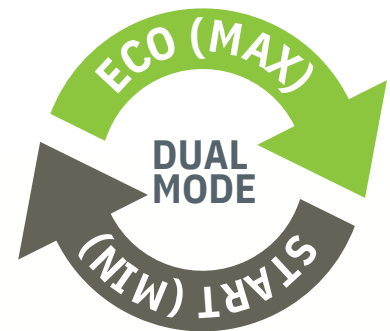
# DirtOUT<sup>®</sup> DUAL MODE

MULTIFUNCTION MAGNETIC DIRT SEPARATOR FOR BOILERS AND HEAT PUMPS

FILTRATION AT ITS BEST!



- ▶ Triple filtering action
- ▶ Self-cleaning
- ▶ Extends the life of the boiler and/or heat pump
- ▶ Guarantees the efficiency of the system



STEP 1



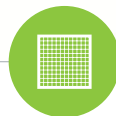
Cyclonic filtering action



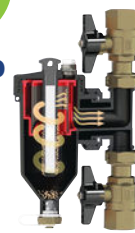
STEP 2



Magnetic filtering action



STEP 3



Mechanical filtering action

MOD.	CODE	SIZE	COLOUR
DF120	DF00120114N	1 1/4" F x 1 1/4" F	Dark grey

THANKS TO THE CYCLONIC AND MAGNETIC SEPARATION UPSTREAM OF THE FILTER, THE CLOGGING PROBLEM IS MINIMIZED.

THE FILTER OUTSIDE THE DIRT COLLECTION CHAMBER REDUCES THE FLUSHING FREQUENCY.

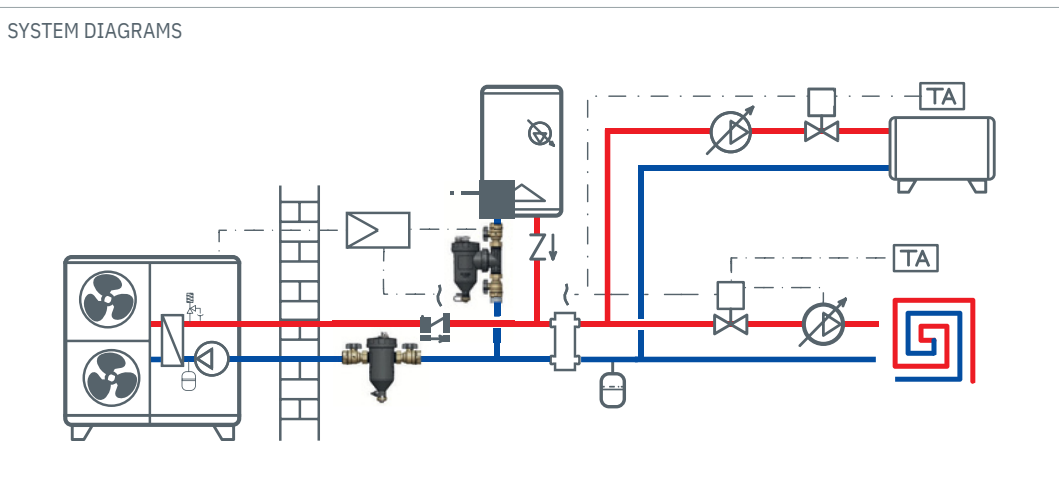


MADE IN ITALY

ELVANDVARMER.DK A/S

**DirtOUT® XL** is the ideal solution to protect the heating system from corrosion that releases impurities into the water. When they reach the generator, these ferrous debris can clog the exchanger or be attracted to the circulator magnets, causing them to block.

The triple filtering action guarantees the deposit of impurities in the central part of the dirt separator where there is the integrated drain cock:



**1**

The cyclonic motion of the fluid guarantees that the debris settles.

**2**

The larger surface magnet captures all ferrous impurities.

**3**

Non-magnetic particles are retained by the 500µ or 800µ filter cartridge.

**CONTINUOUS PROTECTION ON THE GENERATOR**

**ADJUSTABLE BY-PASS**

The DN32 size (Cod. DF00110114N - 1" ¼) has a by-pass which allows the flow passing through the device to be reduced and thus increase the Kv value. Use in **START** mode is recommended by moving the selector to - **MIN** during commissioning and for the first few days of system use. While running, switch to **ECO** mode by moving the selector to - **MAX**.

**START (MIN) MODE**

The **START** mode is mainly used during system startup. In this position all system water is fed through the DirtOUT® XL. The advantage is that air, impurities and magnetite are attracted extremely quickly. This mode allows the first major cleaning of the system to be done.

**ECO (MAX) MODE**

In **ECO** mode, part of the system water (partial flow) is fed through the DirtOUT® XL system. This position ensures lower head loss and pressure drop. The advantage lies in the fact that the system pump has to work less. Air, impurities and magnetite are captured effectively but with reduced consumption.

